





MLLZ PROGRESS HAZELNUT 25X38
MLM0 PROGRESS BROWN 25X38
MLM6 MOSAICO 25X38
MLMJ DECORO 25X38
ML9U PROGRESS BROWN 45X45

(progress)

(progress)

GRES PORCELLANATO SMALTATO / GLAZED PORCELAIN STONEWARE
 GRÈS CÉRAME ÉMAILLÉ / GLASIERTES FEINSTEINZEUG
 GRES PORCELÁNICO ESMALTADO / ГЛАЗУРОВАННЫЙ КЕРАМОГРАНИТ

60x60 · 30x60

RETTIFICATO MONOCALIBRO / RECTIFIED MONOCALIBER / RECTIFIÉ MONOCALIBRE
 REKTIFIZIERT, IN EINEM WERKMASS / RECTIFICADO MONOCALIBRE / РЕКТИФИЦИРОВАННЫЙ МОНОКАЛИБЕРНЫЙ


45x45 · 33,3x33,3

   Conforme/According to/Conforme
 Gemäß/Conforme/Соответствует
UNI EN 14411 - G Bla




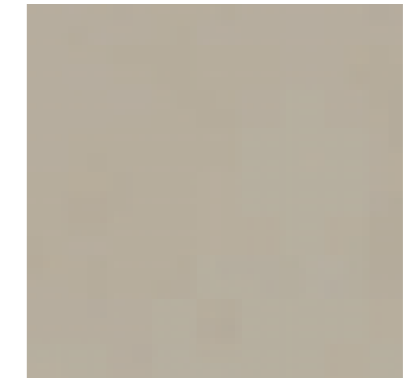
MJML PROGRESS GRAY 33,3X33,3





MKL2 PROGRESS BEIGE RETTIFICATO 60X60 




MKSU PROGRESS BEIGE RETT. 30X60 




ML9S PROGRESS BEIGE 45X45 
MJMH PROGRESS BEIGE 33,3X33,3 





MKL3 PROGRESS HAZELNUT RETTIFICATO 60X60 



MKSV PROGRESS HAZELNUT RETT. 30X60 



ML9T PROGRESS HAZELNUT 45X45 
MJMJ PROGRESS HAZELNUT 33,3X33,3 

RIVESTIMENTI COORDINATI
 COORDINATED WALL TILES
 PASSENDE WANDFLIESEN
 REVETEMENTS COORDONNES
 REVESTIMIENTOS COORDINADOS
 НАСТЕННАЯ ПЛИТКА СКООРДИНИРОВАННЫЕ
PROGRESS pag. 66

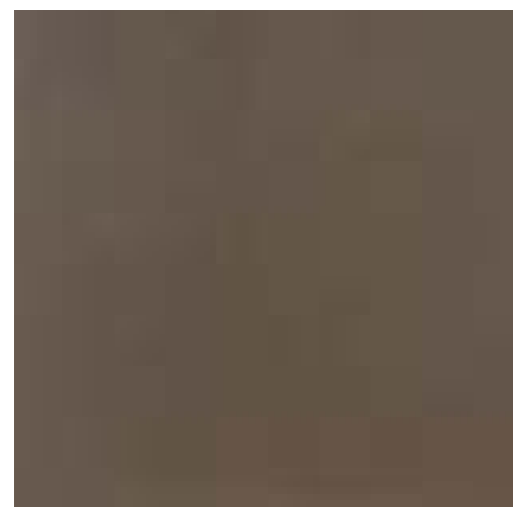


10X10

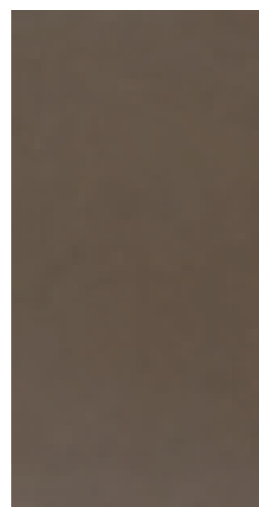


10X10 MODUL P.C.

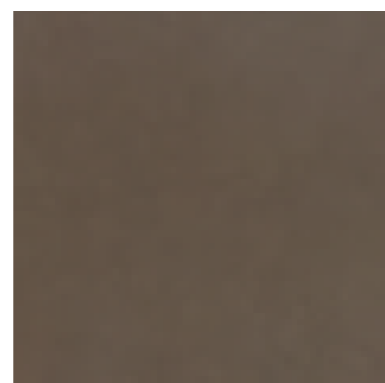
GRES PORCELLANATO SMALTATO / GLAZED PORCELAIN STONEWARE
GRÈS CÉRAME ÉMAILLÉ / GLASIERTES FEINSTEINZEUG
GRES PORCELÁNICO ESMALTADO / ГЛАЗУРОВАННЫЙ КЕРАМОГРАНИТ



MKL4 PROGRESS BROWN RETTIFICATO 60X60 F M50



MKSW PROGRESS BROWN RETT. 30X60 F M50



ML9U PROGRESS BROWN 45X45 F M37
MJMK PROGRESS BROWN 33,3X33,3 F M32



MKL6 PROGRESS ANTHRACITE RETTIFICATO 60X60 F M50



MKSY PROGRESS ANTHRACITE RETT. 30X60 F M50



ML9W PROGRESS ANTHRACITE 45X45 F M37
MJMM PROGRESS ANTHRACITE 33,3X33,3 F M32



MKL5 PROGRESS GRAY RETTIFICATO 60X60 G M50



MKSX PROGRESS GRAY RETT. 30X60 G M50



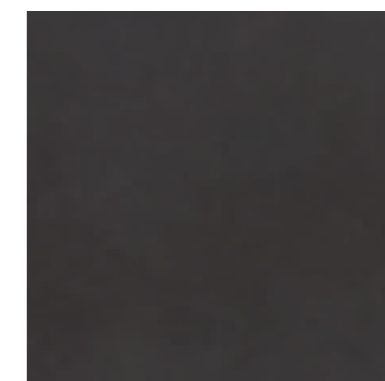
ML9V PROGRESS GRAY 45X45 G M37
MJML PROGRESS GRAY 33,3X33,3 G M32



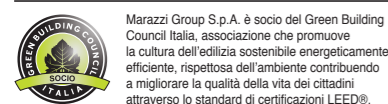
MKL7 PROGRESS BLACK RETTIFICATO 60X60 F M50



MKSZ PROGRESS BLACK RETT. 30X60 F M50



ML9X PROGRESS BLACK 45X45 F M37
MJMN PROGRESS BLACK 33,3X33,3 F M32



Marazzi Group S.p.A. è socio del Green Building Council Italia, associazione che promuove la cultura dell'edilizia sostenibile energeticamente efficiente, rispettosa dell'ambiente contribuendo a migliorare la qualità della vita dei cittadini attraverso lo standard di certificazioni LEED®.

LEED CREDITS
Progress con un contenuto di materiale riciclato del 20% contribuisce al raggiungimento dei crediti LEED® MR4.
Progress has a 20% recycled materials content, and thus contributes towards achieving LEED® credits MR4.
Avec un contenu de matériau recyclé de 20%, Progress permet de totaliser des points de crédit Leed MR4.
Progress trägt dank einem 20-prozentigen Gehalt an wiederverwertetem Material zur Erreichen von LEED®-Krediten MR4 bei.
Progress contribuye, con un contenido de material reciclado del 20%, a la consecución de puntos LEED® MR4.
Плитка «Progress», состоящая на 20% из переработанного материала, способствует получению сертификата LEED® MR4.

* Battiscopa ottenuto per pressatura
Pressed skirting tile
Plinthe obtenue par pressage
Gepresster Sockel
Rodapié obtenido mediante prensado
Плинтус, полученный в результате прессовки

PEZZI SPECIALI SPECIAL TRIMS PIECES SPECIALES SONDERSTÜCKE PIEZAS ESPECIALES СПЕЦИАЛЬНЫЕ ИЗДЕЛИЯ	BATTISCOPA BC 8x33,3* Stile			BATTISCOPA BT 8x45* Stile			BATTISCOPA BT 7x60* Stile			IMBALLI PACKING EMBALLAGES VERPACKUNGEN EMBALAJES УПАКОВКИ	Pezzi Pieces Stok Pièces Piezas Штуки	Mq Sq. Mt Qm Mq Mq Кв. м	Kg Kr	Scatole Box Karton Boite Caja Коробки	Mq Sq. Mt Qm Mq Mq Кв. м	Kg Kr	Spessore Thickness Dicke Épaisseur Толщина
	MJPA	ML9Q	ML9J	MJN6	ML9L	ML9E	MJPC	ML9R	ML9K								
Progress Anthracite	MJPA	ML9Q	ML9J	60x60 Rettificato	3	1,08	25,54	40	43,20	1.021,62	9,0						
Progress Beige	MJN6	ML9L	ML9E	30x60 Rettificato	6	1,08	20,72	48	51,84	994,39	9,0						
Progress Black	MJPC	ML9R	ML9K	45x45	5	1,01	20,72	33	33,41	683,88	9,0						
Progress Brown	MJN8	ML9N	ML9G	33,3x33,3	16	1,77	29,71	38	67,42	1.129,14	8,0						
Progress Hazelnut	MJN7	ML9M	ML9F	10x10 Modul	100	1,00	15,30	72	72,00	1.101,59	7,0						
Progress Gray	MJN9	ML9P	ML9H	10x10 Modul P.C.	96	1,00	15,46	66	66,02	1.020,42	7,0						
				8x33,3 Battiscopa BC	50	16,65 ml	19,59	-	-	-	8,0						
				8x45 Battiscopa BT	30	13,50 ml	21,77	-	-	-	9,0						
				7x60 Battiscopa BT	16	9,60 ml	15,48	-	-	-	9,0						

(progress)

GRES PORCELLANATO SMALTATO / GLAZED PORCELAIN STONEWARE
GRÈS CÉRAME ÉMAILLÉ / GLASIERTES FEINSTEINZEUG
GRES PORCELÁNICO ESMALTADO / ГЛАЗУРОВАННЫЙ КЕРАМОГРАНИТ

10x10 MODUL



R9

Conforme/According to/Conforme
Gemäß/Conforme/Соответствует
UNI EN 14411 - G Bla



M7YK PROGRESS BROWN 10X10
M7YH PROGRESS BEIGE 10X10
M7Y9 INSERTO 10X10

GRES PORCELLANATO SMALTATO / GLAZED PORCELAIN STONEWARE
GRÈS CÉRAME ÉMAILLÉ / GLASIERTES FEINSTEINZEUG
GRES PORCELÁNICO ESMALTADO / ГЛАЗУРОВАННЫЙ КЕРАМОГРАНИТ



M7YH PROGRESS
BEIGE 10X10

H | M40



M7YJ PROGRESS
HAZELNUT 10X10

H | M40



M7YK PROGRESS
BROWN 10X10

G | M40



M7YL PROGRESS
GRAY 10X10

G | M40



M7YM PROGRESS
ANTHRACITE 10X10

G | M40



M7YN PROGRESS
BLACK 10X10

G | M40



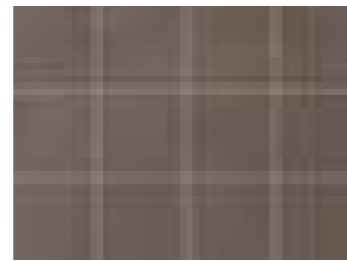
M7YP PROGRESS BEIGE P.C. 10X10

M46



M7YQ PROGRESS HAZELNUT P.C. 10X10

M46



M7YR PROGRESS BROWN P.C. 10X10

M46



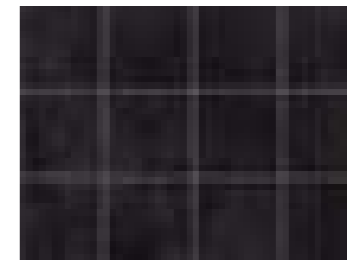
M7YT PROGRESS GRAY P.C. 10X10

M46



M7YU PROGRESS ANTHRACITE P.C. 10X10

M46



M7YV PROGRESS BLACK P.C. 10X10

M46

RIF. PROGRESS BEIGE / HAZELNUT / BROWN



M7ZD INSERTO 10X10

M20

RIF. PROGRESS HAZELNUT



M7ZA INSERTO 10X10

M20

RIF. PROGRESS BROWN



M7Y9 INSERTO 10X10

M22

RIF. PROGRESS GRAY / ANTHRACITE / BLACK



M7ZE INSERTO 10X10

M20

RIF. PROGRESS ANTHRACITE



M7ZC INSERTO 10X10

M20

RIF. PROGRESS BLACK



M7Y8 INSERTO 10X10

M22

RIF. PROGRESS BEIGE



M7ZK
LONDON 4X10

M13

M7ZN ANG. EST.
LONDON 2X4

M22

RIF. PROGRESS HAZELNUT



M7ZL
LONDON 4X10

M13

M7ZU ANG. EST.
LONDON 2X4

M22

RIF. PROGRESS BROWN



M7ZM
LONDON 4X10

M13

M7ZV ANG. EST.
LONDON 2X4

M22

RIF. PROGRESS GRAY



M7ZG
LONDON 4X10

M13

M7ZW ANG. EST.
LONDON 2X4

M22

RIF. PROGRESS ANTHRACITE



M7ZH
LONDON 4X10

M13

M7ZX ANG. EST.
LONDON 2X4

M22

RIF. PROGRESS BLACK



M7ZJ
LONDON 4X10

M13

M6T5 ANG. EST.
LONDON 2X4

M22

PAVIMENTI COORDINATI / CO-ORDINATED FLOORS / CARREAUX DE SOL ASSORTIS
KOORDINIERTE-BODENBELÄGE / PAVIMENTOS COORDINADOS / КООРДИНИРОВАННЫЕ ПОЛЫ

PROGRESS 33,3x33,3
PROGRESS PAV. 60x60 • 45x45 • 30x60 (PAG. 34)

Conforme/According to/Conforme
Gemäß/Conforme/Соответствует
UNI EN 14411 - G Bla



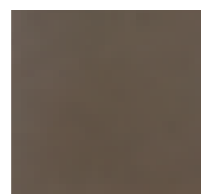
MJMH PROGRESS
BEIGE 33,3X33,3

G | M32



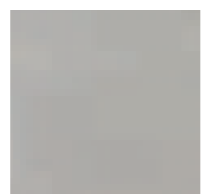
MJMJ PROGRESS
HAZELNUT 33,3X33,3

G | M32



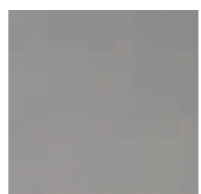
MJMK PROGRESS
BROWN 33,3X33,3

F | M32



MJML PROGRESS
GRAY 33,3X33,3

G | M32



MJMM PROGRESS
ANTHRACITE 33,3X33,3

G | M32



MJMN PROGRESS
BLACK 33,3X33,3

F | M32

Le piastrelle di "Progress" sono caratterizzate da una ricercata variabilità cromatica della superficie.
"Progress" tiles distinguish for their refined surface chromatic variability.
La surface des carreaux de "Progress" est caractérisée par une variabilité chromatique pleine de raffinement.
Die Fliesen "Progress" sind durch eine raffinierte Farbvariabilität der Oberfläche gekennzeichnet.
Los azulejos de "Progress" se caracterizan por una sofisticada variabilidad cromática de la superficie.
Плитка серии "Progress" характеризуется изысканным цветовым разнообразием поверхности.

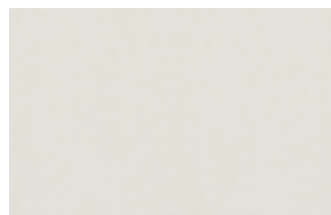
* Battiscopa ottenuto per pressatura / Pressed skirting tile / Plinthe obtenue par pressage
Gepresster Sockel / Rodapié obtenido mediante prensado / Плинтус, полученный в результате прессовки

PEZZI SPECIALI SPECIAL TRIMS PIECES SPECIALES SONDERSTÜCKE PIEZAS ESPECIALES СПЕЦИАЛЬНЫЕ ИЗДЕЛИЯ	M05 BATTISCOPA BC 8x33,3 Bib	IMBALLI PACKING EMBALLAGES VERPACKUNGEN EMBALAJES УПАКОВКИ	Pezzi Pieces		Kg Kr	Scatole Box Karton Boite Caja Коробки		Spessore Thickness Dicke Épaisseur Espesor Толщина	
			Mq Sq. Mt Qm Mq Mq Кв. м	Mq Sq. Mt Qm Mq Mq Кв. м					
Progress Anthracite	MJPA	10x10 Modul	100	1,00	15,30	72	72,00	1.101,59	7,0
Progress Beige	MJN6	10x10 Modul P.C.	96	1,00	15,46	66	66,02	1.020,42	7,0
Progress Black	MJPC	33,3x33,3 Progress Pav.	16	1,77	29,71	38	67,42	1.129,14	8,0
Progress Brown	MJN8	8x33,3 Battiscopa BC	50	16,65 ml	19,59	-	-	-	8,0
Progress Hazelnut	MJN7	10x10 Inserto	4	0,04	0,61	-	-	-	-
Progress Gray	MJN9	4x10 London	6	0,02	0,36	-	-	-	-
		2x4 Ang. Est. London	4	-	0,08	-	-	-	-

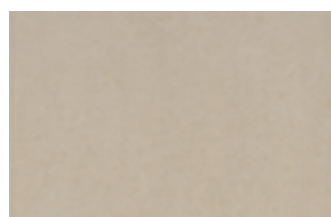
25X38



Conforme/According to/Conforme
Gemäß/Conforme/Соответствует
UNI EN 14411 - L BIII



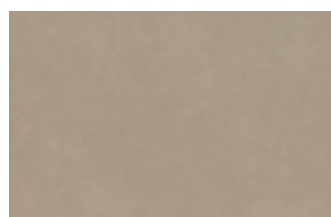
MH03 PROGRESS WHITE 25X38 M37



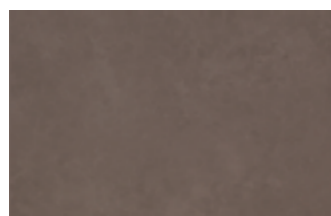
MLLY PROGRESS BEIGE 25X38 M37



MLPP DECORO 25X38 M24



MLLZ PROGRESS HAZELNUT 25X38 M37



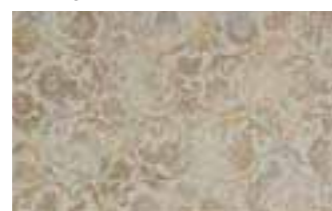
MLM0 PROGRESS BROWN 25X38 M37

RIF. BEIGE



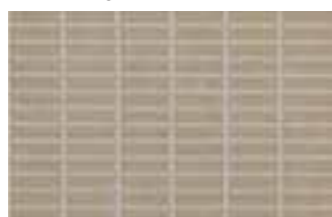
MLM4 MOSAICO 25X38 M47

RIF. BEIGE



MLPM DECORO 25X38 M24

RIF. HAZELNUT



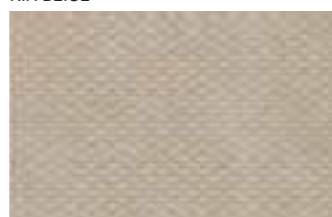
MLM5 MOSAICO 25X38 M47

RIF. BROWN



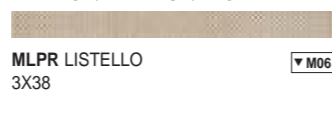
MLM6 MOSAICO 25X38 M47

RIF. BEIGE

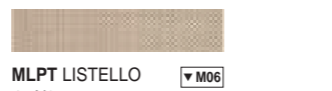


MLMH DECORO 25X38 M47

RIF. BEIGE / HAZELNUT / BROWN

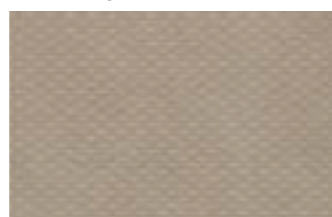


MLPR LISTELLO 3X38 M06

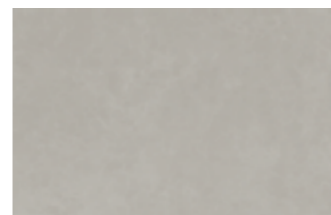


MLPT LISTELLO 4,5X25 M06

RIF. HAZELNUT

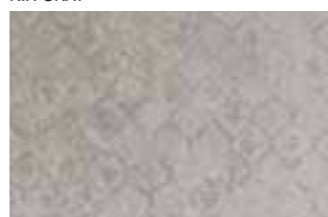


MLMJ DECORO 25X38 M47

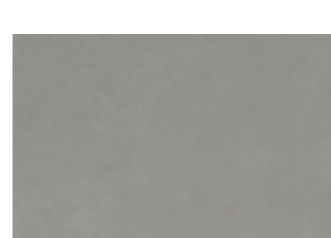


MLM1 PROGRESS GRAY 25X38 M37

RIF. GRAY

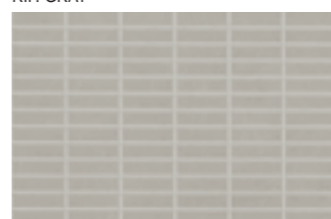


MLPQ DECORO 25X38 M24



MLM2 PROGRESS ANTHRACITE 25X38 M37

RIF. GRAY



MLM7 MOSAICO 25X38 M47

RIF. GRAY



MLPN DECORO 25X38 M24

RIF. ANTHRACITE



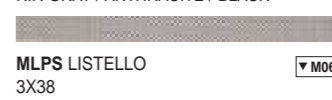
MLM8 MOSAICO 25X38 M47

RIF. GRAY



MLMK DECORO 25X38 M47

RIF. GRAY / ANTHRACITE / BLACK

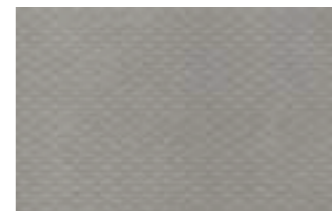


MLPS LISTELLO 3X38 M06



MLPU LISTELLO 4,5X25 M06

RIF. ANTHRACITE



MLML DECORO 25X38 M47



Marazzi Group S.r.l. è socio del Green Building Council Italia, associazione che promuove la cultura dell'edilizia sostenibile energeticamente efficiente, rispettosa dell'ambiente contribuendo a migliorare la qualità della vita dei cittadini attraverso lo standard di certificazioni LEED®.

LEED CREDITS

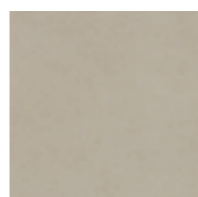
Progress con un contenuto di materiale riciclato del 20% contribuisce al raggiungimento dei crediti LEED® MR4. Progress has a 20% recycled materials content, and thus contributes towards achieving LEED® credits MR4. Avec un contenu de matériau recyclé de 20%, Progress permet de totaliser des points de crédit LEED MR4. Progress trägt dank einem 20-prozentigen Gehalt an wiederverwertetem Material zur Erreichen von LEED®-Krediten MR4 bei. Progress contribuye, con un contenido de material reciclado del 20%, a la consecución de puntos LEED® MR4. Плитка «Progress», состоящая на 20% из переработанного материала, способствует получению сертификата LEED® MR4.

PAVIMENTI COORDINATI IN GRES PORCELLANATO SMALTATO / GLAZED PORCELAIN STONWARE CO-ORDINATED FLOORS / REVÊTEMENTS DE SOL COORDONNÉS EN GRÈS CÉRAME ÉMAILLÉ
KOORDINIERTE FUSSBÖDEN AUS GLASIERTEM FEINSTEINZEUG / PAVIMENTOS COORDINADOS DE GRES PORCELÁNICO ESMALTADO / СОЧЕТАЮЩАЯСЯ НАПОЛЬНАЯ ПЛИТКА ИЗ ГЛАЗУРОВАННОГО КЕРАМОГРАНИТА

PROGRESS 33,3X33,3



Conforme/According to/Conforme/Gemäß/Conforme/Соответствует
UNI EN 14411 - G Bia



MJMH PROGRESS BEIGE 33,3X33,3 G M32



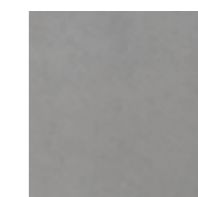
MJMJ PROGRESS HAZELNUT 33,3X33,3 G M32



MJMK PROGRESS BROWN 33,3X33,3 F M32



MJML PROGRESS GRAY 33,3X33,3 G M32



MJMM PROGRESS ANTHRACITE 33,3X33,3 F M32



MJMN PROGRESS BLACK 33,3X33,3 F M32

IMBALLI PACKING EMBALLAGES VERPACKUNGEN EMBALAJES УПАКОВКИ	Pezzi Pieces Stck Pièces Piezas Штуки			Scatole Box Karton Boite Caja Коробки			Spessore Thickness Dicke Épaisseur Espesor Толщина				
	Mq Sq. Mt Qm Mq Mq Кв. м	Kg Kr		Mq Sq. Mt Qm Mq Mq Кв. м	Kg Kr						
25x38	14	1,33	19,41	54	71,82	1.047,86	8,5	25x38 Decoro	4	0,38	5,48
25x38 Mosaico	13	1,24	18,02	54	66,69	973,01	9,0	3x38 Listello	6	0,07	0,99
25x38 Decoro (MLMH-MLMJ-MLMK-MLML)	14	1,33	19,44	54	71,82	1.050,00	8,5	4,5x25 Listello	6	0,07	0,97
33,3x33,3	16	1,77	29,71	38	67,42	1.129,14	8,0				